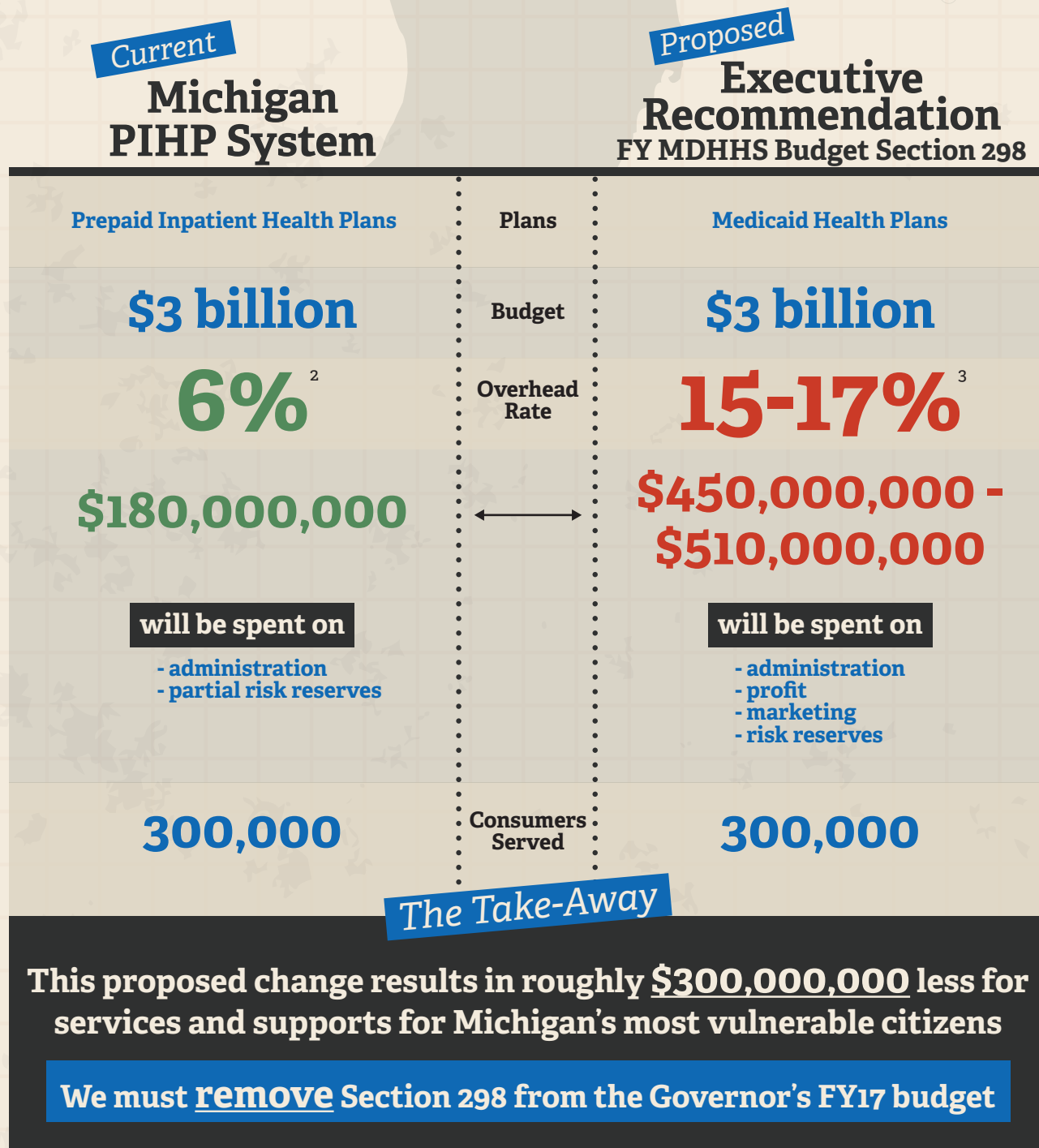


PROTECTING MICHIGAN'S MOST VULNERABLE CITIZENS

Michigan's behavioral health system is considered a leader in innovation and integrating high quality care for over 300,000 citizens. Michigan is the only state that is completely managed care and has integrated mental illness, intellectual/developmental disabilities, and substance use disorder services into one system. According to a 2015 Public Sector Consultants report Michigan is pioneering advances in care that is **innovative, cost-effective and evidence-based**.¹

However, despite Michigan's many successes in behavioral health care, the FY17 executive budget recommendation includes section 298 of the Michigan Department of Health and Human Services Budget - a proposed change without any initial research or analysis that would transfer management responsibilities of all Medicaid behavioral health dollars (\$3 billion) from the current publicly managed PIHP system to the privately managed Medicaid health plans by the end of FY17. This change would significantly harm an already underfunded system of care for Michigan's most vulnerable citizens.



SOURCES:

¹ "Community Mental Health in Michigan: Evidence and Innovation," Public Sector Consultants, Lansing, January 2015.

² PIHP Medicaid utilization and net cost report

³ 2016 Michigan Comprehensive Health Plan contract